

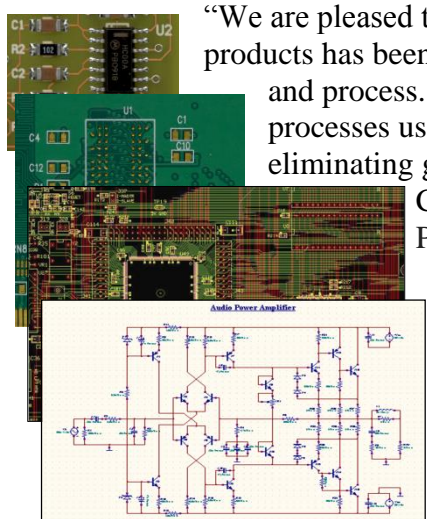


FOR IMMEDIATE RELEASE

Precisely Reverse Engineer a Multilayer PCB to exact Form, Fit and Function

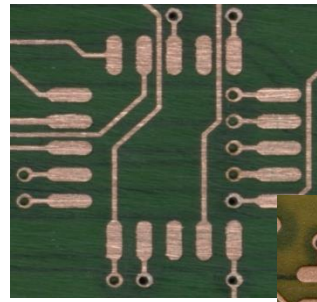
December 2014

Morrison, CO, USA - ScanCAD International has announced the release of a new product and process for PCB delamination that permits customers to effectively and quickly delaminate multilayer PCBs and also remove conformal coatings in preparation for legacy product PCB re-engineering. Delamination is a critical part of the PCB Re-Engineering process which is needed by companies to maintain & repair legacy multilayer PCBs where the data has been lost. ScanCAD products can be used to 100% reverse engineer them from a populated PCB directly back to full CAD data for manufacturing and complete schematics for repair and support.



“We are pleased to announce that our extensive family of PCB re-engineering products has been enhanced with the addition of a new PCB delamination system and process. This new system and process is much superior to previous processes used and has been carefully tested and proven to work, eliminating guess work and costly mistakes.” said Bill Loving, President & CEO, ScanCAD. “PCB delamination allows even multilayer PCBs to be re-engineered to the exact Form, Fit and Function as the original PCB to make sure the PCB works exactly as required with other PCBs in the system. This avoids costly environmental and functional testing and recertification of the PCB since the re-engineered PCB will be an exact duplicate of the original PCB.”

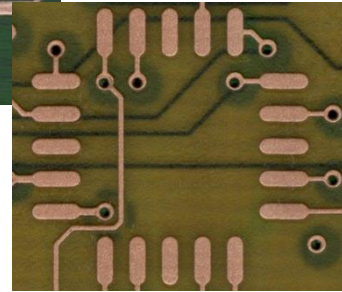
This new process has many benefits over previous processes including the ability to selectively remove material, even for the smallest traces and spaces to ensure no mistakes are made. Many times customers have only a single PCB remaining and it is critical that no mistakes are made or data lost during the delamination process. The new delamination process used at ScanCAD gets the customer much closer to the goal of perfect data. In addition, this new process is much faster than previous techniques with the added benefit of utilizing a self contained unit that is so clean it can even be used in an office environment and is safe enough that the operator does not require gloves or other safety equipment.



Previous method



New Delamination process



ScanCAD systems permit an operator to start with a populated PCB and end up with a complete CAD design and schematic that exactly matches the original design. PCBs are part of integrated systems. As such, replacement PCBs must interact or handshake with other system components in exactly the same way as the original PCB. This new process optically duplicates each and every nuance on each and every layer of the PCB, regardless of the number of inner layers. Analog or Digital, rigid or flex, the new PCB will be identical to the original PCB.

ScanCAD is a global provider of optical inspection, legacy re-engineering and process control tools for the PCB Design, Fabrication, Assembly and Semiconductor industries. For more information about the schematic generation process using ScanFAB with the new PCB Delamination Product or other ScanCAD products, contact ScanCAD International, Inc. 12779 West Belleview Ave., Littleton, CO 80127 USA, +1.303.697.8888, info@scancad.com, www.scancad.com.